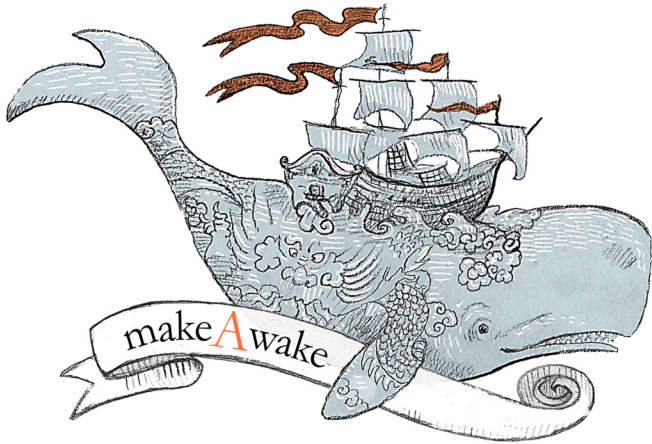


erin eitter kono



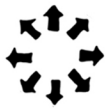
EVERY CREATURE HAS A STORY

Athena is a black widow spider named after the warrior goddess of wisdom. She is a force to be reckoned with. But even a big, dangerous spider can feel small when her most precious web is threatened.

AUTHOR/ILLUSTRATOR/ARTIST

www.eekono.com

Print and fold this page in quarters to create your own collectable wildlife character card.



BLACK WIDOW SPIDER

EVERY CREATURE HAS A STORY
collector card 001

Black Widow Spider
Not one to mess with

Athena is a black widow spider (Scientific Name: Latrodectus). The black widow is the most poisonous spider in North America. Her poison is 15 times as potent as that from a rattlesnake. There is a popularly held belief that the female black widow eats the male after mating, but that rarely happens in nature. The female black widow weaves a complex web, which she protects. The male Latrodectus does not build webs. He moves into a female's web, cuts and unravels it.

PHYLUM: Arthropoda

CLASS: Arachnida

FAMILY: Theridiidae

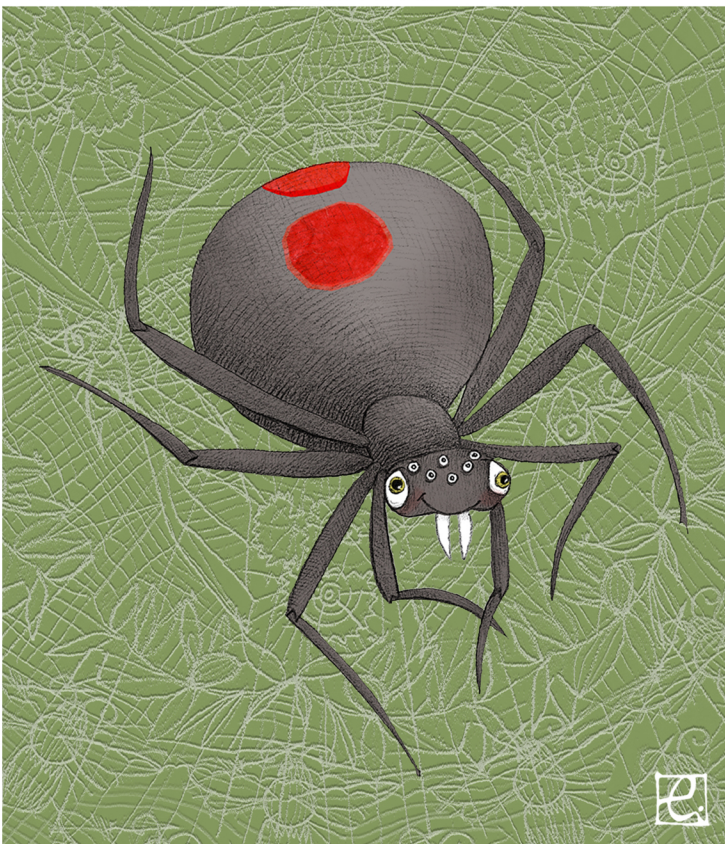
CHARACTERISTICS:

Sharp fangs and shiny black and red body

Size: 1.3cm - 3.8cm (0.5in - 1.5in)

Average Life Span: 3 yrs.

HABITAT: Urban, temperate forest and woodland



erin eitter kono

AUTHOR/ILLUSTRATOR/ARTIST



www.eekono.com